

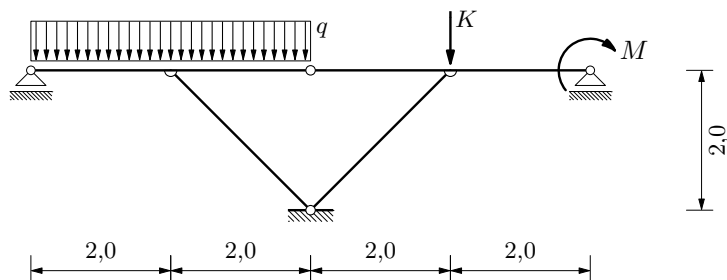
# GS 1. — 22. ožujka 2006.

1. Analitičkim postupkom nacrtajte momentni dijagram.

$$q = 80 \text{ kN/m'}$$

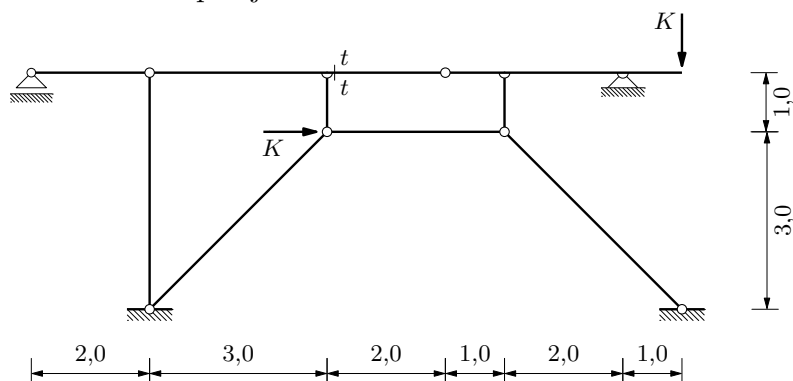
$$K = 40 \text{ kN}$$

$$M = 40 \text{ kNm}$$



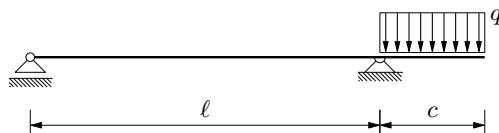
2. Grafičkim postupkom odredite sile u presjeku  $t-t$ .

$$K = 100 \text{ kN}$$



3. Izračunajte vertikalni pomak kraja prepusta.

$$EI = \text{const}$$



4. Pomoću utjecajnih linija izračunajte  $M_{t-t}$ ,  $M_{c-c}$  i  $T_{t-t}$ .

$$q = 80 \text{ kN/m'}$$

$$K = 100 \text{ kN}$$

$$M = 80 \text{ kNm}$$

