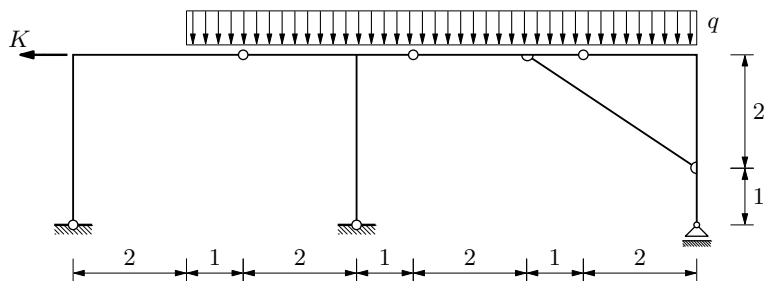
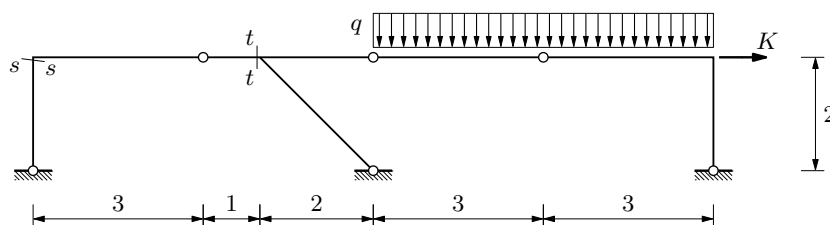


GS 1. — 25. veljače 2004.

1. Analitičkim postupkom odredite M -dijagram: $q = 40 \text{ [kN/m]}'$; $K = 60 \text{ [kN]}$

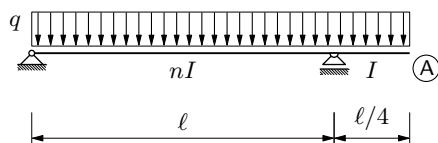


2. Pomoću utjecajnih linija izračunajte $M_{t-t}(q, K)$, $T_{t-t}(q, K)$ i $M_{s-s}(q, K)$:
 $q = 60 \text{ [kN/m]}'$; $K = 120 \text{ [kN]}$

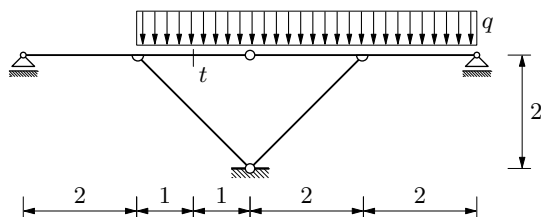


3. Izračunajte progib točke A.

$E = \text{const.}$



4. Grafičkim postupkom odredite $[M, T, N]_{t-t}$: $q = 120 \text{ [kN/m]}'$



5. Silu $\vec{K} = 10\vec{i} + 20\vec{j} + 10\vec{k}$ kroz ishodište rastavite na komponente na pravcima
 $p_1 \equiv y = x$, $p_2 \equiv y = z$, $p_3 \equiv x = z$.