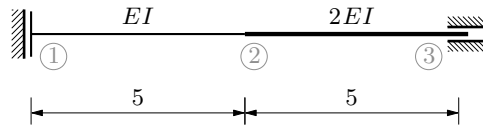


GS 2. — kolokvij (2023./2024.)

Zadatak B3.

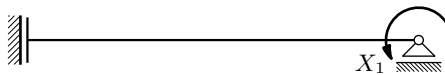
Nacrtajte utjecajnu liniju za reaktivni moment u desnom ležaju!



izbor metode crtanja momentnoga dijagrama: kao u rješenju zadatka A3, dostupnom u datoteci <http://master.grad.hr/nastava/gs/gs2/isp/2-23-k-a3.pdf>

smisao vrtnje reaktivnoga momenta:

metoda sila:



o. s.

$$\delta_{1,1} X_1 = \bar{\delta}_{1,0} = 1$$



m_1

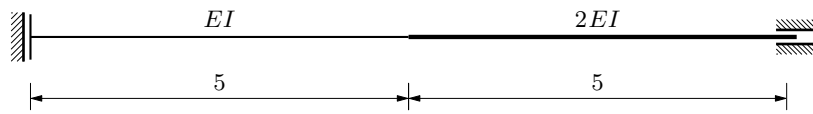
$$\delta_{1,1} = \frac{1}{EI} (1 \cdot 5) \cdot 1 + \frac{1}{2EI} (1 \cdot 5) \cdot 1$$

$$= \frac{15}{2EI}$$

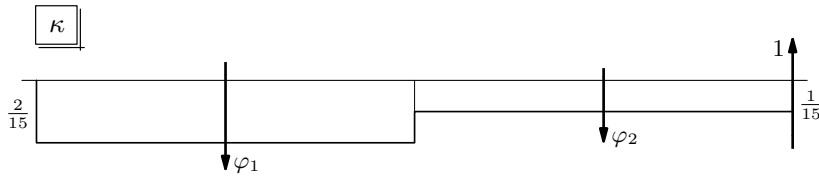
$$X_1 = \frac{2EI}{15}$$

utjecajna linija na sljedećoj stranici

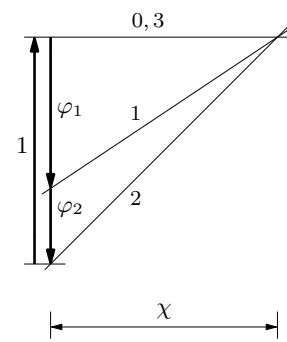
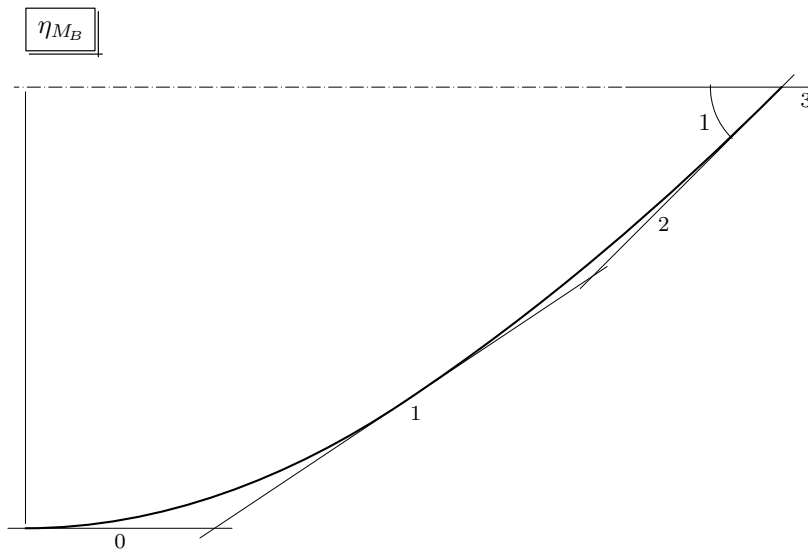
utjecajna linija:



mjerilo duljina:
 $1 \text{ [cm]} :: 1 \text{ [m]}$



mjerilo kutova:
 $1 \text{ [cm]} :: \frac{1}{3}$



$$\varphi_1 = \frac{2}{15} \cdot 5 = \frac{2}{3}$$

$$\varphi_2 = \frac{1}{15} \cdot 5 = \frac{1}{3}$$

$$\chi = 1$$