

<https://doi.org/10.31896/k.27.1>

Original scientific paper

Accepted 15. 9. 2023.

RONALDO GARCIA
DIMAS TEJADA

Principal Lines on an Ellipsoid in a Minkowski Three-Dimensional Space

Principal Lines on an Ellipsoid in a Minkowski Three-Dimensional Space

ABSTRACT

The description of principal lines of the ellipsoid on the 3-dimensional Minkowski space is established. A global principal parametrization of a triple orthogonal system of quadrics is also achieved, and the focal set of the ellipsoid is sketched.

Key words: principal lines, configuration principal, Minkowski three-dimensional space, ellipsoid, triple orthogonal system

MSC2010: 53C12, 53C50, 37C86, 37E35

Glavne krivulje zakrivljenosti elipsoida u trodimenzionalnom prostoru Minkowskog

SAŽETAK

U radu su opisane glavne krivulje zakrivljenosti (crte krivine) elipsoida u trodimenzionalnom Minkowskijevom prostoru. Navedena je i globalna parametrizacija trostruko ortogonalnog sustava te je prikazan fokalni skup elipsoida.

Ključne riječi: glavne krivulje zakrivljenosti (crte krivine), glavna konfiguracija, trodimenzionalni prostor Minkowskog, elipsoid, trostruko ortogonalni sustav

1 Introduction

The goal of this work is to describe the global behavior of principal lines of the ellipsoid in the three dimensional Minkowski space $\mathbb{R}^{2,1}$. We recall that the concept of principal lines were introduced by G. Monge [11] and geometrically they can be characterized as the curves on the surface such that the ruled surface having the rules being the normal straight lines along the curve is a developable surface [18, page 93].

The principal lines of the ellipsoid with three different axes in the Euclidean space \mathbb{R}^3 are as illustrated in Fig. 1. In this case, the principal lines of the triaxial ellipsoid are obtained by Dupin's theorem. The ellipsoid belongs to a triple orthogonal family of surfaces, formed by the ellipsoid and two hyperboloids (one of one leaf and the other of two leaves).

For more recent and historical developments of principal lines on surfaces see [4], [13], [14], [15] and [16]. This work is organized as follows. In section 2 we recall the basic properties of the Minkowski 3-space and principal lines. In section 3 we describe the global behavior of principal lines in the ellipsoid. In section 4 we will describe the

topological equivalence of the principal configuration of the ellipsoid. In section 5 we will show that the geometric inversion in Minkowski 3-space preserves lines of curvature. In section 6 we obtain a triple orthogonal system of quadrics. Finally, in section 7 the focal set of the ellipsoid is analyzed.

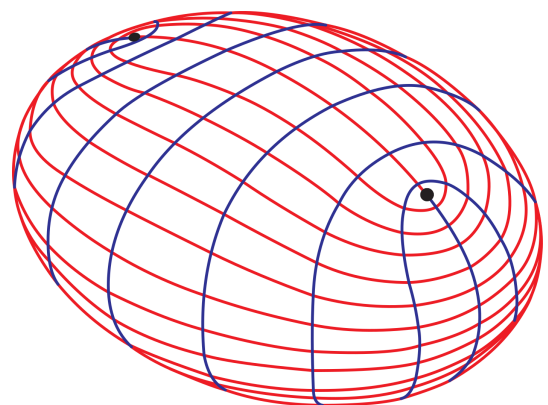


Figure 1: *Principal lines on the triaxial ellipsoid. There are four umbilic points, the singularities. Also, there are four umbilic separatrices and other principal lines are closed.*

2 Preliminaries

The Minkowski 3-space $\mathbb{R}^{2,1} = (\mathbb{R}^3, \langle \cdot, \cdot \rangle)$ is the vector space \mathbb{R}^3 endowed with the inner product $\langle u, v \rangle = u_1v_1 + u_2v_2 - u_3v_3$, where $u = (u_1, u_2, u_3)$ and $v = (v_1, v_2, v_3)$. The norm is $\|v\| = \sqrt{|\langle v, v \rangle|}$.

The vector product $u \times v$, is a vector such that $\langle u \times v, u \rangle = \langle u \times v, v \rangle = 0$. Then

$$u \times v = \begin{vmatrix} i & j & -k \\ u_1 & u_2 & u_3 \\ v_1 & v_2 & v_3 \end{vmatrix}.$$

A vector v is said to be

- spacelike, if $\langle v, v \rangle > 0$ or $v = 0$,
- timelike, if $\langle v, v \rangle < 0$,
- lightlike, if $\langle v, v \rangle = 0$ and $v \neq 0$.

A plane is called spacelike (resp. timelike, lightlike), if the normal vector is timelike (resp. spacelike, lightlike).

A regular curve is spacelike (resp. timelike, lightlike) if the tangent vector is spacelike (resp. timelike, lightlike). A smooth surface is called spacelike (resp. timelike) if the tangent planes are spacelike (resp. timelike).

Let $\alpha: M \rightarrow \mathbb{R}^{2,1}$ be a C^r ($r \geq 4$) immersion of a smooth and oriented surface M of dimension two in $\mathbb{R}^{2,1}$. Let $X(u, v): \mathbb{R}^2 \rightarrow M$ be a local parametrization. The first fundamental form is

$$I = Edu^2 + 2Fdudv + Gdv^2,$$

where $E = \langle Xu, Xu \rangle$, $F = \langle Xu, Xv \rangle$ and $G = \langle Xv, Xv \rangle$.

Given $p \in M$, if $\det(I_p) = EG - F^2$ is positive (resp. negative), the surface is spacelike or Riemannian (resp. timelike or Lorentzian) in the point p . This is equivalent to say that tangent plane is spacelike or timelike. The metric induced on M can be degenerate; this happens at the points p on M where the tangent space TM_p is lightlike, or equivalently that $\det(I_p) = EG - F^2 = 0$. We call this set of points the *tropic* and will be denoted by LD (Locus of Degeneracy).

On a spacelike (resp. timelike) surface, we define the *Gauss map*

$$N(u, v) = \varepsilon \cdot \frac{\alpha_u \times \alpha_v}{\|\alpha_u \times \alpha_v\|}(u, v)$$

such that $N: M \rightarrow H^{2,1}$ with $\varepsilon = 1$ (resp. $N: M \rightarrow S^{2,1}$ with $\varepsilon = -1$), where $H^{2,1} = \{(x, y, z) \in \mathbb{R}^3 : x^2 + y^2 - z^2 = -1\}$ and $S^{2,1} = \{(x, y, z) \in \mathbb{R}^3 : x^2 + y^2 - z^2 = 1\}$.

The sign $\varepsilon = \pm 1$ is only necessary to define the base positively oriented $\{\alpha_u, \alpha_v, N\}$ in all over the surface (except in the tropic), this is,

$$\det(\alpha_u, \alpha_v, N) = \frac{\varepsilon}{\|\alpha_u \times \alpha_v\|} \langle \alpha_u \times \alpha_v, \alpha_u \times \alpha_v \rangle > 0, \quad [9, \text{page } 50].$$

The second fundamental form is

$$II = edu^2 + 2fdudv + gdv^2,$$

where $e = \langle X_{uu}, N \rangle$, $f = \langle X_{uv}, N \rangle$ and $g = \langle X_{vv}, N \rangle$.

The mean curvature H and Gauss curvature K are defined by

$$H = \frac{Eg + Ge - 2Ff}{2(EG - F^2)} \quad \text{and} \quad K = \frac{eg - f^2}{EG - F^2},$$

and the principal curvatures k_1 and k_2 are defined by

$$k_1 = H + \sqrt{H^2 - K} \quad \text{and} \quad k_2 = H - \sqrt{H^2 - K}.$$

In general, a surface $M \subset \mathbb{R}^{2,1}$ has a Riemannian part and a Lorentzian part. On the Riemannian part, dN_p does have real eigenvalues; on Lorentzian part, dN_p does not always have real eigenvalues. These eigenvalues are the principal curvatures k_1 and k_2 in each point and the respective eigendirections of dN_p are called principal directions and they define two line fields \mathcal{L}_1 and \mathcal{L}_2 mutually orthogonal in M . They are determined by non-zero vectors on $T_p(M)$ which satisfy the implicit differential equation

$$(Fg - Gf)dv^2 + (Eg - Ge)dudv + (Ef - Fe)du^2 = 0. \quad (1)$$

The integral curves of the equation (1) are called *lines of curvature or principal lines*. The families of principal lines \mathcal{F}_1 and \mathcal{F}_2 associated with \mathcal{L}_1 and \mathcal{L}_2 , respectively, are called principal foliations of M . An umbilic point is defined as a point where $II = cI$ for some constant c . It is called a spacelike (resp. timelike) umbilic point when it is on Riemannian (resp. Lorentzian) part of M . The set of umbilic points is denoted by \mathcal{U} .

The map N is not defined on the tropic, but since the equation (1) is homogeneous, we can multiply the coefficients of (1) by $\|\alpha_u \times \alpha_v\|$. Let $L_1 = \|\alpha_u \times \alpha_v\| (Fg - Gf)$, $M_1 = \|\alpha_u \times \alpha_v\| (Eg - Ge)$ and $N_1 = \|\alpha_u \times \alpha_v\| (Ef - Fe)$.

So, the equation of curvature lines (or principal lines) can be extended to the tropic by

$$L_1 dv^2 + M_1 dvdu + N_1 du^2 = 0. \quad (2)$$

The tropic $LD = (EG - F^2)^{-1}(0)$ is generically a curve that is solution of the equation (2), [21, Lemma 1.31]. The discriminant of the equation (2), define the set of points where it determines a unique direction or an umbilic point, the first set is denoted by LPL (Lighthlike Principal Locus). On the Riemannian part $LPL = \emptyset$, and on the Lorentzian part the set LPL is generically a curve that divide locally the surface into two regions, in one of them there are no real principal directions and in the other there are two real principal directions at each point, [7].

Definition 1 The quintuple $\mathbb{P}_M = \{\mathcal{F}_1, \mathcal{F}_2, \mathcal{U}, LD, LPL\}$ is called the **principal configuration** of M , or rather of the immersion α of M in $\mathbb{R}^{2,1}$.

Definition 2 Two principal configurations \mathbb{P}_{M_1} and \mathbb{P}_{M_2} are C^0 -principally equivalent if there exists a homeomorphism $h : M_1 \rightarrow M_2$ which is a topological equivalence between them, i.e., h sends principal foliations, umbilic set, LD and LPL of M_1 in the correspondent of M_2 .

Remark 1 The umbilic points can also be seen as the points where $L_1 = M_1 = N_1 = 0$.

Remark 2 A smooth curve c is a principal line, if this curve satisfies the equation (2) and there are no umbilic points on c .

Remark 3 Let $X(u, v)$ be a local parametrization of M . If $F = f = 0$ then $L_1 = N_1 = 0$ and (u, v) is a principal curvature coordinate system. It is called a principal chart.

Triply orthogonal system (see [8, 18]).

In this subsection, it will be introduced a triple orthogonal systems of surfaces in the Minkowski space $\mathbb{R}^{2,1}$.

Definition 3 A triply orthogonal system of surfaces is a differentiable map $X : W \rightarrow \mathbb{R}^{2,1}$, defined on an open set $W \subset \mathbb{R}^{2,1}$, satisfying:

- The linear map $dX_{(u,v,w)} : T_{(u,v,w)}\mathbb{R}^{2,1} \rightarrow T_{X(u,v,w)}\mathbb{R}^{2,1}$ is bijective for all $(u, v, w) \in W$.
- $\langle X_u, X_v \rangle = \langle X_u, X_w \rangle = \langle X_w, X_v \rangle = 0$.

Let $p = (u_0, v_0, w_0) \in W$. Consider the three surfaces

$$(u, v) \mapsto X(u, v, w_0)$$

$$(u, w) \mapsto X(u, v_0, w)$$

$$(v, w) \mapsto X(u_0, v, w),$$

we denote these surfaces by M_{w_0} , M_{v_0} and M_{u_0} , respectively. They are regular surfaces by the condition a).

Notice that by condition b), $F = 0$ on each of them. Furthermore, $X_w(u, v, w_0)$ is normal to M_{w_0} at (u, v, w_0) (similarly to other two surfaces) and differentiating,

$$\langle X_u, X_v \rangle_w = \langle X_u, X_w \rangle_v = \langle X_w, X_v \rangle_u = 0.$$

Therefore,

$$\langle X_{uv}, X_w \rangle = \langle X_{uw}, X_v \rangle = \langle X_{vw}, X_u \rangle = 0,$$

which means that $f = 0$ on each of the surfaces. By remark (3), we may conclude that:

Theorem 1 The coordinate curves on a surface belonging to a triply orthogonal system in a Minkowski three-dimensional space are principal curvature lines.

3 The Ellipsoid in the Minkowski space

Consider the family of surfaces

$$\mathbb{F}_u = \{(x, y, z) : \frac{x^2}{a^2 - u} + \frac{y^2}{b^2 - u} + \frac{z^2}{c^2 + u} = 1\}$$

$$\mathbb{G}_v = \{(x, y, z) : \frac{x^2}{a^2 - v} + \frac{y^2}{b^2 - v} + \frac{z^2}{c^2 + v} = 1\}$$

$$\mathbb{H}_w = \{(x, y, z) : \frac{x^2}{a^2 - w} + \frac{y^2}{b^2 - w} + \frac{z^2}{c^2 + w} = 1\}$$

where $a > b > 0$ (the case $b > a > 0$ is similar) and $c > 0$.

Let $U_E := \{(u, v, w) \in (-c^2, b^2) \times (b^2, a^2) \times (-c^2, b^2)\}$. For $(u, v, w) \in U_E$, \mathbb{F}_u , \mathbb{H}_w are ellipsoids and \mathbb{G}_v is a hyperboloid of one leaf.

Theorem 2 The surfaces \mathbb{F}_u , \mathbb{G}_v and \mathbb{H}_w define a triple orthogonal system for $(u, v, w) \in U_E$, $u \neq w$.

Proof. Solving the system below in the variables $\{x, y, z\}$

$$\begin{aligned}\frac{x^2}{a^2-u} + \frac{y^2}{b^2-u} + \frac{z^2}{c^2+u} - 1 &= 0 \\ \frac{x^2}{a^2-v} + \frac{y^2}{b^2-v} + \frac{z^2}{c^2+v} - 1 &= 0 \\ \frac{x^2}{a^2-w} + \frac{y^2}{b^2-w} + \frac{z^2}{c^2+w} - 1 &= 0,\end{aligned}$$

it is obtained in the positive octant:

$$\begin{aligned}x(u, v, w) &= \sqrt{\frac{(a^2-u)(a^2-v)(a^2-w)}{(a^2-b^2)(a^2+c^2)}} \\ y(u, v, w) &= \sqrt{\frac{-(b^2-u)(b^2-v)(b^2-w)}{(a^2-b^2)(b^2+c^2)}} \\ z(u, v, w) &= \sqrt{\frac{(c^2+u)(c^2+v)(c^2+w)}{(a^2+c^2)(b^2+c^2)}}.\end{aligned}$$

A long and straightforward calculations show that

$$X(u, v, w) = (x(u, v, w), y(u, v, w), z(u, v, w)) \quad (3)$$

satisfies $\langle X_u, X_v \rangle = \langle X_u, X_w \rangle = \langle X_v, X_w \rangle = 0$. Moreover,

$$\det(DX(u, v, w)) =$$

$$\frac{(u-v)(u-w)(v-w)}{8x(u, v, w)y(u, v, w)z(u, v, w)(a^2-b^2)(a^2+c^2)(b^2+c^2)} \neq 0.$$

□

Since $\{\mathbb{F}_u, \mathbb{G}_v, \mathbb{H}_w\}$ is a triple orthogonal system, these surfaces intersect along their curvature lines. The curvature lines can be obtained globally by symmetry in relation to the coordinates planes.

Now, we fixed w and defined the ellipsoid $\mathbb{E}_w = \mathbb{H}_w$ with $(u, v, w) \in U_E$, so we have that the principal lines on \mathbb{E}_w are the intersection curves, with the hyperboloid of one leaf \mathbb{G}_v and with the other ellipsoid \mathbb{F}_u (See Fig. 2).

In each octant, we have that for \mathbb{E}_w the parametrization (3) is a principal chart, i.e., $f = F = 0$. So, the principal lines are $u = \text{constant}$ and $v = \text{constant}$, and these curves are exactly the intersection between surfaces.

Remark 4 *The triply orthogonal system of quadratic surfaces in the Euclidean space is made up by an ellipsoid, a hyperboloid of one leaf and a hyperboloid of two leaves [4, Chapter 2]. See also [12, Chapter 7] for more details about the geometric properties of confocal quadrics.*

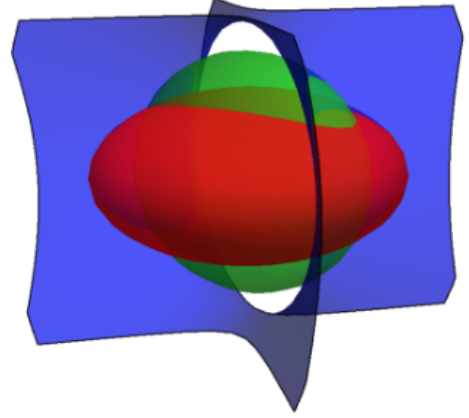


Figure 2: *Triply orthogonal system defined by two ellipsoids and one hyperboloid of one leaf.*

To complete the description, the principal configuration is necessary to analyze the curves of the intersections of the ellipsoid with the coordinates planes. Without loss of generality, we do $w = 0$, i.e., we analyze

$$\mathbb{E}_0 = \left\{ (x, y, z) : \frac{x^2}{a^2} + \frac{y^2}{b^2} + \frac{z^2}{c^2} = 1 \right\}$$

with $a > b > 0$ and $c > 0$ (it is allowed $a = c$ or $b = c$).

The parametrization below is inspired in the Euclidean case. See also Section 6 where a global parametrization will be obtained in a triply orthogonal system of quadrics.

Lemma 1 *The parametrization*

$$\begin{aligned}X(u, v) &= (a \cos(u)A(v), b \sin(u) \sin(v), c \cos(v)B(u)) \\ A(v) &= \sqrt{A_1 \cos^2(v) + \sin^2(v)}, \\ B(u) &= \sqrt{B_1 \cos^2(u) + \sin^2(u)}\end{aligned} \quad (4)$$

with $(u, v) \in U_1 = [0, \pi] \times [0, 2\pi]$ or $(u, v) \in U_2 = [0, 2\pi] \times [0, \pi]$, where $A_1 = \frac{a^2-b^2}{a^2+c^2}$ and $B_1 = \frac{b^2+c^2}{a^2+c^2}$, defines a principal chart (u, v) on the ellipsoid \mathbb{E}_0 .

Proof. Calculating of the coefficients of the first and second fundamental form, we have

$$E = - \frac{((a^2 - b^2) \cos^2 u - a^2) ((a^2 - b^2) \cos^2 u + (b^2 + c^2) \cos^2 v - a^2 - c^2)}{(a^2 - b^2) \cos^2 u - a^2 - c^2}$$

$$F = 0$$

$$G = - \frac{((a^2 - b^2) \cos^2 u + (b^2 + c^2) \cos^2 v - a^2 - c^2) ((b^2 + c^2) \cos^2 v - c^2)}{-(b^2 + c^2) \cos^2 v + a^2 + c^2}$$

$$e = \frac{abc ((a^2 - b^2) \cos^2 u + (b^2 + c^2) \cos^2 v - a^2 - c^2)^2}{\sqrt{(b^2 + c^2) \cos^2 v - c^2 - a^2 ((a^2 - b^2) \cos^2 u - a^2 - c^2)^{\frac{3}{2}}}}$$

$$f = 0$$

$$g = \frac{b ((a^2 - b^2) \cos^2 u + (b^2 + c^2) \cos^2 v - a^2 - c^2)^2 ac}{((b^2 + c^2) \cos^2 v - c^2 - a^2)^{\frac{3}{2}} \sqrt{(a^2 - b^2) \cos^2 u - a^2 - c^2}}$$

Since that, $F = f = 0$ then $L_1 = N_1 = 0$ in the equation (2). So, by Remark 3, we have that X defines a parametrization by principal lines, i.e., (u, v) is a principal chart.

The parametrization (X, U_1) (resp. (X, U_2)) cover all the ellipsoid and is smooth, except in the curves $X(0, v)$ and $X(\pi, v)$ (resp. $X(u, 0)$ and $X(u, \pi)$). \square

Proposition 1 *On the ellipsoid \mathbb{E}_0 , we have that:*

a. *The curves $c_x = \{(x, y, z) : x = 0\} \cap \mathbb{E}_0$ and $c_z = \{(x, y, z) : z = 0\} \cap \mathbb{E}_0$ are principal lines.*

b. *\mathbb{E}_0 has exactly four spacelike umbilic points,*

$$\left(\pm a \sqrt{\frac{a^2 - b^2}{a^2 + c^2}}, 0, \pm c \sqrt{\frac{b^2 + c^2}{a^2 + c^2}} \right).$$

c. *The umbilic points are of type D_1 .*

d. *The curve $c_y = \{(x, y, z) : y = 0\} \cap \mathbb{E}_0$ is the union of principal lines. Moreover, these are the separatrices of the umbilic points.*

e. *The tropic is composed by two disjoint regular closed curves. Moreover, these curves are principal lines.*

f. *The principal lines are globally defined, i.e., the set $LPL = \emptyset$.*

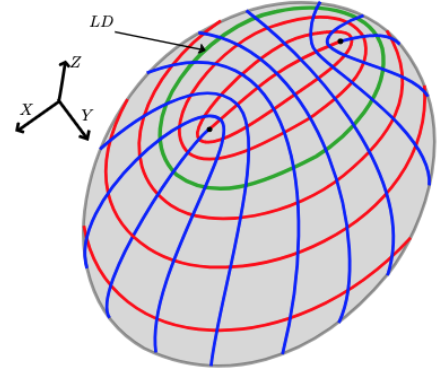


Figure 3: Principal lines on the Ellipsoid in the Minkowski space. Parameters $a = 2.0$, $b = 1.5$, $c = 2.2$.

Proof.

a) Consider the principal chart (X, U_1) (resp. (X, U_2)) given by Lemma 1. We have $c_x = X(\frac{\pi}{2}, v)$ (resp. $c_z = X(u, \frac{\pi}{2})$).

The principal chart (X, U_1) (resp. (X, U_2)) is smooth, except in the curves $X(0, v)$ and $X(\pi, v)$ (resp. $X(u, 0)$ and $X(u, \pi)$), but this curves not intersect with c_x (resp. c_z). Therefore, c_x (resp. c_z) is a principal line of the ellipsoid.

b) Consider the parametrization,

$$X(u, v) = \left(au, bv, \pm c \sqrt{1 - u^2 - v^2} \right). \quad (5)$$

Then the differential equation of principal lines (2) with X is

$$\begin{aligned} E(u, v, du : dv) = & -uv(a^2 + c^2)du^2 + uv(b^2 + c^2)dv^2 \\ & + (u^2(a^2 + c^2) - v^2(b^2 + c^2) - a^2 + b^2)dudv = 0. \end{aligned} \quad (6)$$

We have that $L_1 = N_1 = 0$ when $u = 0$ or $v = 0$. If $u = 0$ then $M_1 = -v^2(b^2 + c^2) - a^2 + b^2 \neq 0$. If $v = 0$, we have that $M_1 = u^2(a^2 + c^2) - a^2 + b^2 = 0$ if and only if

$$u_0 = \pm \sqrt{\frac{a^2 - b^2}{a^2 + c^2}}.$$

So, there are four umbilic points. Moreover,

$$(EG - F^2)(u_0, 0) = \frac{b^4(a^2 + c^2)}{b^2 + c^2} > 0,$$

and then the umbilic points are in the Riemannian part of E_0 , i.e., they are spacelike umbilic points.

c) For completeness, it will be included a detailed sketch of proof. We take $p = \frac{dv}{du}$ in the equation (6), so

$$\begin{aligned} F(u, v, p) = & -uv(a^2 + c^2) \\ & + (u^2(a^2 + c^2) - v^2(b^2 + c^2) - a^2 + b^2)p \\ & + uv(b^2 + c^2)p^2 = 0. \end{aligned}$$

Under the hypothesis, the implicit surface $F^{-1}(0)$ is a regular surface, contain the projective line, and is topologically a cylinder. The map $\pi : F^{-1}(0) \rightarrow \mathbb{R}^2$, $\pi(x, y, p) = (x, y)$ is a ramified double covering and $\pi^{-1}(u_0, 0)$ is the projective line parametrized by $[du : dv]$. The umbilic point $P_1 = \left(a\sqrt{\frac{a^2-b^2}{a^2+c^2}}, 0, c\sqrt{\frac{b^2+c^2}{a^2+c^2}}\right)$ has coordinates $u_0 = \sqrt{\frac{a^2-b^2}{a^2+c^2}}$ and $v = 0$. The Lie-Cartan line field associated to the implicit equation $F(u, v, p) = 0$ is $Y = (F_p, pF_p, -(F_x + pF_y))$ on the surface $M = F^{-1}(0)$, $M \subset \mathbb{R}^2 \times \mathbb{R}P^1$. The solutions of the implicit differential equation $F(u, v, p) = 0$ are the projections of the integral curves of Y . See [1] and [4].

We have that

$$Y(u_0, 0, p) = \left(0, 0, -\sqrt{\frac{a^2-b^2}{a^2+c^2}}p(b^2p^2 + c^2p^2 + a^2 + c^2)\right) = (0, 0, 0)$$

if and only if $p = 0$.

Moreover, the eigenvalues of $DY(u_0, 0, 0)$ are,

$$\lambda_1 = 2\sqrt{\frac{a^2-b^2}{a^2+c^2}}(a^2+c^2), \quad \lambda_2 = -2\sqrt{\frac{a^2-b^2}{a^2+c^2}}(a^2+c^2).$$

Therefore, $(u_0, 0, 0)$ is a hyperbolic saddle point of Y . To complete the analysis, it is also necessary to consider the chart $q = du/dv$ in the equation (6) to obtain an implicit surface $G(u, v, q) = 0$. Now the Lie-Cartan vector field is $Z = (qG_q, G_q, -(qG_u + G_v))$. We have that $Z(u_0, 0, q) \neq 0$. Gluing the phase portraits of Y and Z near the projective line $[du : dv]$ we obtain a line field on the cylinder with a unique hyperbolic singular point. The projections of the leaves (integral curves of X and Y) are the principal lines of the ellipsoid near the umbilic point. See Fig. 4.

Therefore, the umbilic point P_1 is Darbouxian of type D_1 (see also [4]). By symmetry, all the other umbilic points are also of type D_1 .

d) Using the parametrization (5), a curve c_y satisfies the equation the principal lines (6). Furthermore, the umbilic points are on c_y , so this curve is a union of principal lines and the umbilic points. Since the umbilic points are D_1 , we obtain the result as stated.

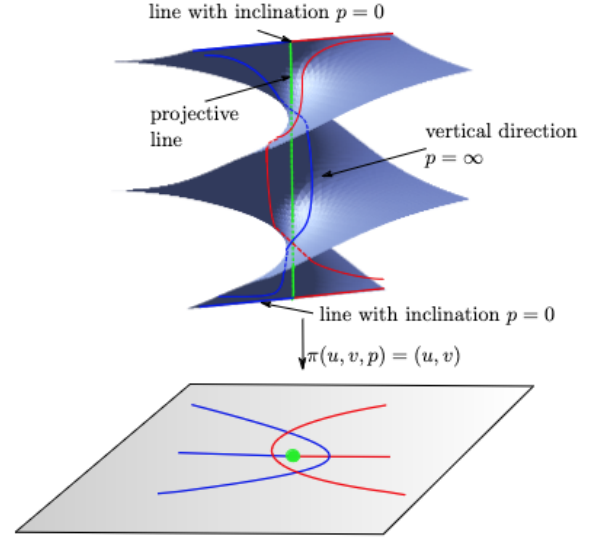


Figure 4: Implicit surface $F(u, v, p) = 0$ (cylinder) and a ramified double covering π with $\pi^{-1}(u_0, 0)$ being the projective line. The top and bottom lines with inclination $p = 0$ are identified.

e) Using the chart defined by equation (4) with $(u, v) \in U_1$, we have that

$$\begin{aligned} EG - F^2 = & ((b^2 + c^2)\cos^2(v) - c^2)((a^2 - b^2)\cos^2(u) - a^2) \\ & ((a^2 - b^2)\cos^2(u) + (b^2 + c^2)\cos^2(v) - a^2 - c^2)^2 = 0. \end{aligned}$$

if, and only if, $v_1 = \arccos\left(\frac{c}{\sqrt{c^2+b^2}}\right)$ or $v_2 = \arccos\left(-\frac{c}{\sqrt{c^2+b^2}}\right) = \pi - v_1$.

The tropic is the union of the closed curves $c_1(u) = X(u, v_1)$ and $c_2(u) = X(u, v_2)$. As $v = \text{constant}$ and (X, U_1) is a principal chart, then c_1 and c_2 are principal lines.

f) Since the parametrization (4) is defined globally on \mathbb{E}_0 and defines a principal chart, it follows that $L_1 = N_1 = 0$ and $LPL = M_1^2 \geq 0$. Therefore, the principal lines are globally defined. \square

Confocal and orthogonal family of conics

Performing the change of coordinates by $u = \sqrt{\frac{b^2+c^2}{a^2+c^2}}x$ and $v = y$, then equation (6) is given by

$$-xydx^2 + (x^2 - y^2 - \lambda^2)dxdy + xydy^2 = 0$$

with $\lambda^2 = \frac{a^2-b^2}{b^2+c^2}$. The coordinates axes, the family of ellipses

$$u(t) = R\cos(t), \quad v(t) = r\sin(t), \quad R^2 = r^2 + \lambda^2$$

and the family of hyperbolas

$$u(t) = R \cosh(t), \quad v(t) = r \sinh(t), \quad R^2 - r^2 = \lambda^2$$

are the solutions of the differential equation above. This is similar to Euclidean case, see [4].

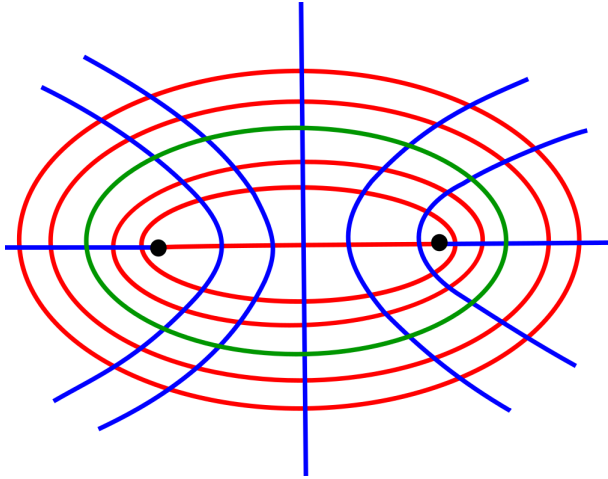


Figure 5: Confocal and orthogonal family of conics. The tropic is shown in green and is parametrized by $\cos^2 v = c/(b+c)$.

Horizontal ellipsoid of revolution.

When $a = c$ or $b = c$, we have four spacelike umbilic points of type D_1 , while with the Euclidean scalar product only have two umbilic points of center type.

Vertical ellipsoid of revolution and Euclidean sphere.

When $a = b$ and $c > 0$, the parametrization (4) is reduced to

$$X(u, v) = (a \sin(v) \cos(u), a \sin(v) \sin(u), c \cos(v)).$$

The equation of principal lines is

$$a^2 c (a^2 \cos^2(v) + c^2 \cos^2(v) - a^2 - c^2)^4 dudv = 0.$$

Therefore, the principal lines are $u = constant$ and $v = constant$. We have only two spacelike umbilic points $(0, 0, \pm c)$ of type center.

On ellipsoid of revolution with $a = b$ and $c \neq a$, the principal lines are the same in the two geometries (Euclidean and Lorentzian).

With the Euclidean scalar product the Euclidean sphere is a umbilic surface, while with the Lorentzian scalar product the Euclidean sphere has only two spacelike umbilic points of type center.

Umbilic surfaces.

The umbilic surfaces with Euclidean inner scalar are the Euclidean sphere and planes, while with Lorentzian inner scalar the umbilic surfaces are planes, the vertical hyperboloid of one leaf $\mathbb{S}_1^2(c, r) = \{p \in \mathbb{R}^{2,1} : \langle p - p_0, p - p_0 \rangle = r^2\}$ and vertical hyperboloid of two leaves $\mathbb{H}_1^2(c, r) = \{p \in \mathbb{R}^{2,1} : \langle p - p_0, p - p_0 \rangle = -r^2\}$, see [3, page 191] and [9, page 85].

Remark 5 For the study of geodesics on an ellipsoid in the Minkowski space $\mathbb{R}^{2,1}$ see [5]. The analysis of umbilic points in smooth surfaces in $\mathbb{R}^{2,1}$ of the form $f_\varepsilon(x, y, z) = x^2/a^2 + y^2/b^2 + z^2/c^2 + h.o.t = \varepsilon$ was developed in [6].

4 Topological equivalence of principal foliations

In this section we will obtain that the principal configurations of the ellipsoids of three distinct axes are all principal topologically equivalent. The Euclidean case was established by J. Sotomayor [15].

Proposition 2 Consider an ellipsoid $E(x, y, z) = ax^2 + by^2 + cz^2 + 2dxy + 2exz + 2fyz + gx + hy + kz + l = 0$. Then there exists an isometry $h: \mathbb{R}^{2,1} \rightarrow \mathbb{R}^{2,1}$ such that $E(h(u, v, w)) = \lambda_1 u^2 + \lambda_2 v^2 + \lambda_3 w^2 = 1$, with $\lambda_i > 0$ for $(i = 1, 2, 3)$.

Proof. The rotation group of $\mathbb{R}^{2,1}$ is $SO(2, 1)$ of dimension 3 and is generated by the Euclidean and Hyperbolic rotations defined by:

$$\begin{aligned} R(u, v, w) &= (u \cos \theta + v \sin \theta, -u \sin \theta + v \cos \theta, w) \\ S(u, v, w) &= (u \cosh \alpha + w \sinh \alpha, v, u \sinh \alpha + w \cosh \alpha) \\ T(u, v, w) &= (u, v \cosh \beta + w \sinh \beta, v \sinh \beta + w \cosh \beta) \end{aligned}$$

The quadric form $q(x, y, z) = ax^2 + by^2 + cz^2 + 2dxy + 2exz + 2fyz$ is positive definite when one of the following conditions holds:

$$\begin{aligned} a > 0, ab - d^2 > 0, abc - af^2 - be^2 - cd^2 + 2def = \Delta > 0, \\ b > 0, bc - f^2 > 0, \Delta > 0, \\ c > 0, ac - e^2 > 0, \Delta > 0. \end{aligned}$$

In this case the eigenvalue problem

$$\det \begin{pmatrix} a-x & d & e \\ d & b-x & f \\ e & f & c+x \end{pmatrix} = 0$$

has three real eigenvalues $x_1 \leq x_2 \leq x_3$ and the correspondent eigenvectors e_1, e_2, e_3 are orthonormal relative to the Minkowski inner product. Therefore, one of the eigenvectors, say e_3 , is timelike and the other two $\{e_1, e_2\}$ are spacelike. There exists an isometry h (composition of hyperbolic rotations) such that $h(0, 0, -1) = e_3$. In the new coordinates we have that $q_1(u, v, w) = q(h(u, v, w)) = a_1u^2 + b_1v^2 + c_1w^2 + d_1uv$.

Also, there exists an isometry H (Euclidean rotation) such that

$$q_1(H(u_1, v_1, w_1)) = a_2u_1^2 + b_2v_1^2 + c_1w_1^2, a_2 > 0,$$

$$b_2 > 0, c_1 > 0.$$

Finally, with a translation we obtain the result stated. \square

Remark 6 In general, a hyperboloid is not isometric to one given in a diagonal form. The classification of conics in Minkowski plane is carried out in [10].

Theorem 3 Consider the set of ellipsoids \mathcal{E} with three distinct axes in the space of quadrics \mathcal{Q} of \mathbb{R}^3 . Then the principal configurations of any two elements of \mathcal{E} are principal topologically equivalent.

Proof. The principal configuration of an ellipsoid with three different axes in the diagonal form $x^2/a^2 + y^2/b^2 + z^2/c^2 = 1$ has the following properties.

- i) There are four umbilic points of Darbouxian type D_1 .
- ii) The set LD is the union of two regular curves.
- iii) The set LPL is empty.
- iv) The principal foliations \mathcal{F}_1 and \mathcal{F}_2 have all leaves closed, with the exception of the umbilic separatrices. See Fig. 3.

The construction of the topological equivalence can be done explicitly using the method of canonical regions defined by the union of two topological disks and a cylinder; the boundary being the tropics. See [17] and Fig. 6. By Proposition 2, any ellipsoid is isometric to an ellipsoid in the diagonal form. This ends the proof. \square

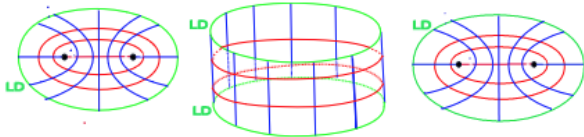


Figure 6: Decomposition of the ellipsoid in three canonical regions foliated by principal lines; the boundary of each region is formed by the tropic lines.

5 Geometric Inversion in Minkowski space

In this section, we will show that the principal lines are the same when we consider the inversion of the surface with respect to a given point in the space. Recall that the inversion is defined by:

$$I_q(p) = \frac{p - q}{\langle p - q, p - q \rangle}.$$

Proposition 3 Consider a regular surface S and a point $q \in \mathbb{R}^{2,1} \setminus S$. Let $S_q = I_q(S)$, where I_q is the inversion with respect to the point q . The principal lines on S are the same that on S_q .

Proof. Consider the local parametrization

$$X(u, v) = (u, v, h(u, v)).$$

Calculating the equation of principal lines of X , we have that:

$$\begin{aligned} & (h_{uv}h_v^2 - h_{vv}h_uh_v - h_{uv})dv^2 \\ & + (h_{uu}h_v^2 + h_{vv} - h_{vv}h_u^2 - h_{uu})dvdu \\ & + (h_{uv} + h_uh_vh_{uu} - h_{uv}h_u^2)du^2 = 0. \end{aligned} \quad (7)$$

The local parametrization of the inverted surface in the relation to the point $q = (q_1, q_2, q_3)$, is given by:

$$\begin{aligned} \bar{X}(u, v) &= \frac{1}{\langle X(u, v) - q, X(u, v) - q \rangle} (X(u, v) - q) \\ &= \frac{1}{(u - q_1)^2 + (v - q_2)^2 - (h(u, v) - q_3)^2} \\ &\quad \cdot (u - q_1, v - q_2, h(u, v) - q_3). \end{aligned}$$

Calculating the first fundamental form of \bar{X} it follows that

$$E = -\frac{h_u^2 - 1}{Q_0^2}, \quad F = -\frac{h_uh_v}{Q_0^2}, \quad G = -\frac{h_v^2 - 1}{Q_0^2},$$

with $Q_0 = \langle X(u, v) - q, X(u, v) - q \rangle$. Similarly, we calculate the coefficients of the second fundamental form:

$$\begin{aligned} e &= \frac{1}{Q_0^4} [2(q_1 - u)h_u^3 + 2((q_2 - v)h_v + h - q_3)h_u^2 \\ &\quad + 2(u - q_1)h_u + 2(v - q_2)h_v + 2q_3 - 2h \\ &\quad + (h^2 - 2hq_3 - q_1^2 + 2q_1u - q_2^2 + 2q_2v + q_3^2 - u^2 - v^2)h_{uu}] \\ f &= \frac{1}{Q_0^4} [2(q_1 - u)h_vh_u^2 + 2((q_2 - v)h_v^2 + (h - q_3)h_v)h_u \\ &\quad + h^2h_{uv} - 2hh_{uv}q_3 - h_{uv}q_1^2 + 2h_{uv}q_1u - h_{uv}q_2^2 \\ &\quad + 2h_{uv}q_2v + h_{uv}q_3^2 - h_{uv}u^2 - h_{uv}v^2] \\ g &= \frac{1}{Q_0^4} [2((q_1 - u)h_v^2 + u - 2q_1)h_u + 2(q_2 - 2v)h_v^3 \\ &\quad + 2(h - q_3)h_v^2 + 2(v - q_2)h_v + 2q_3 - 2h \\ &\quad + (h^2 - 2hq_3 - q_1^2 + 2q_1u - q_2^2 + 2q_2v + q_3^2 - u^2 - v^2)h_{vv}]. \end{aligned}$$

Then, the coefficients of the differential equation of the principal lines are given by:

$$\begin{aligned} L &= Fg - Gf = \frac{h_u h_v h_{vv} - h_{uv} h_v^2 + h_{uv}}{\langle X - q, X - q \rangle^5}, \\ M &= Eg - Ge = \frac{h_u^2 h_{vv} - h_{uu} h_v^2 + h_{uu} - h_{vv}}{\langle X - q, X - q \rangle^5}, \\ N &= Ef - Fe = \frac{h_u^2 h_{uv} - h_u h_{uu} h_v - h_{uv}}{\langle X - q, X - q \rangle^5}. \end{aligned}$$

So, the differential equation of the principal lines of \bar{X} is exactly (7). The analysis, with local parametrization $(u, h(u, v), v)$ or $(h(u, v), u, v)$ are analog.

Therefore, the principal lines of the surface S and of the inverted surface S_q are related by the inversion I_q , i.e., if $\gamma(s)$ is a principal line of S , then $I_q(\gamma(s))$ is a principal line of S_q . \square

6 Triple Orthogonal System in Minkowski space

In this section a global parametrization of a triple orthogonal system of quadrics in the Minkowski 3-space will be established.

Let $Z(u, v, w) = (A(u, v, w), B(u, v, w), C(u, v, w))$ defined by:

$$\begin{aligned} A(u, v, w) &= \cos u \cosh w \sqrt{(\varepsilon n^2 + m^2) \cos^2 v + m^2 \sin^2 v} \\ B(u, v, w) &= m \sin u \sin v \sinh w \\ C(u, v, w) &= \\ &\cos(v) \sqrt{\frac{(\varepsilon n^2 \cos^2 u - m^2 \sin^2 u) (\varepsilon n^2 \cosh^2 w + m^2 \sinh^2 w)}{\varepsilon n^2 + m^2}} \end{aligned} \quad (8)$$

Here $\varepsilon = \pm 1$.

Theorem 4 *The map Z defined by equation (8) is a triple orthogonal system of quadrics in $\mathbb{R}^{2,1}$ (Minkowski 3-space). More precisely, the quadrics are given by:*

$$\begin{aligned} \mathcal{E}_1 &: \frac{x^2}{m^2 \cosh^2 w} + \frac{y^2}{m^2 \sinh^2 w} + \frac{z^2 (m^2 + \varepsilon n^2)}{(\varepsilon n^2 \cosh^2 w - m^2 \sinh^2 w) m^2} = 1 \\ \mathcal{E}_2 &: \frac{x^2 (m^2 + \varepsilon n^2)}{m^2 (m^2 + \varepsilon n^2 \cos^2 v)} + \frac{(m^2 + \varepsilon n^2) y^2}{\varepsilon m^2 n^2 \sin^2 v} + \frac{z^2 (m^2 + \varepsilon n^2)}{\varepsilon m^2 n^2 \cos^2 v} = 1 \\ \mathcal{H}_1 &: \frac{x^2}{m^2 \cos^2 u} - \frac{y^2}{m^2 \sin^2 u} + \frac{z^2 (m^2 + \varepsilon n^2)}{m^2 (m^2 \sin^2 u + \varepsilon n^2 \cos^2 u)} = 1. \end{aligned}$$

Proof. The map Z defined by equation (8) was inspired in [19] where a similar map was obtained in the Euclidean

case. The main idea is to try a parametrization with separation of variables as

$$\begin{aligned} Z(u, v, w) &= \\ &(h_1 \cos u \cos w a(v), h_2 \sin u \sin v \sinh w, h_3 c(u) d(w) \cos v). \end{aligned}$$

A long, and straightforward calculation, using the equation (8), leads to

$$\langle Z_u, Z_u \rangle = \langle Z_u, Z_w \rangle = \langle Z_v, Z_w \rangle = 0.$$

The quadrics defined by equation (8) was obtained by the method of elimination of variables from the equations

$$A(u, v, w) - x = 0, \quad B(u, v, w) - y = 0, \quad C(u, v, w) - z = 0. \quad \square$$

Remark 7 For $\varepsilon = -1$, $m = \sqrt{a^2 - b^2}$, $n = \sqrt{(b^2 + c^2)(a^2 - b^2)}/\sqrt{a^2 + c^2}$ and $\cosh w = a/\sqrt{a^2 - b^2}$ it follows that $Z_w(u, v) = Z(u, v, w)$ is a parametrization of the ellipsoid $x^2/a^2 + y^2/b^2 + z^2/c^2 = 1$.

7 Focal set of a surface in the Minkowski space

The focal set of a surface M can be defined as the singular set of the congruence of lines given by

$$L(u, v, t) = \alpha(u, v) + tN(u, v)$$

where α is a parametrization of M and N is the normal vector to the surface. Also, the focal set can be seen as the locus of the centers of curvature of the given surface.

$$\mathcal{F}_i : \alpha(u, v) + \frac{1}{k_i(u, v)} N(u, v), \quad (i = 1, 2).$$

See [2] and [20].

Proposition 4 *The focal set \mathcal{F}_1 of the ellipsoid is parametrized by*

$$(A_1(u, v), B_1(u, v), C_1(u, v))$$

where:

$$\begin{aligned} A_1(u, v) &= \frac{\cos^3 u (a^2 - b^2)}{a\sqrt{a^2 + b^2}} \sqrt{(a^2 - b^2) \cos^2 v + (a^2 + c^2) \sin^2 v} \\ B_1(u, v) &= -\frac{\sin^3 u \sin v (a^2 - b^2)}{b} \\ C_1(u, v) &= \frac{\cos v}{c\sqrt{a^2 + c^2}} \left[(b^2 + c^2) \cos^2 u + (a^2 + c^2) \sin^2 u \right]^{\frac{3}{2}}. \end{aligned}$$

The focal set \mathcal{F}_2 of the ellipsoid is parametrized by $(A_2(u, v), B_2(u, v), C_2(u, v))$ where:

$$A_2(u, v) = \frac{\cos u}{a\sqrt{a^2 + c^2}} [(a^2 - b^2)\cos^2 v + (a^2 + c^2)\sin^2 v]^{\frac{3}{2}}$$

$$B_2(u, v) = \frac{\sin u \sin^3 v (b^2 + c^2)}{b}$$

$$C_2(u, v) = \frac{(b^2 + c^2)\cos^3 v}{c\sqrt{a^2 + c^2}} \sqrt{(b^2 + c^2)\cos^2 u + (a^2 + c^2)\sin^2 u}$$

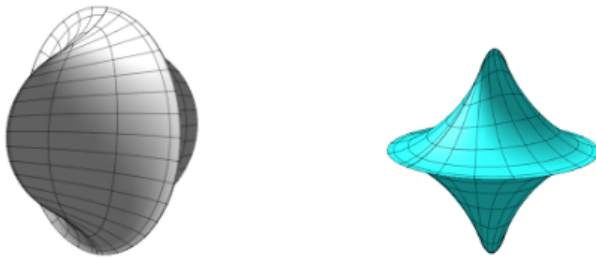


Figure 7: The focal surfaces \mathcal{F}_1 and \mathcal{F}_2 of the ellipsoid. Both are singular on two arcs of ellipses connecting the umbilic points and each is singular in an ellipse contained in a coordinate plane. At the umbilic points the singularities are of type D_4^+ (Arnold's notation).

Proof. It follows directly from the parametrization of the ellipsoid Z_w given by Remark 7. It is worth to observe that at the tropics defined by $\cos v = \pm c/\sqrt{b^2 + c^2}$ the principal curvatures k_i are unbounded but at these sets the normal N has norm zero and the product $(1/k_i)N$ has a finite limit. See [20]. \square

Acknowledgments

The first author is fellow of CNPq (313724/2021-0) and coordinator of Project PRONEX/ CNPq/ FAPEG 2017 10 26 7000 508.

References

- [1] BRUCE, J.W., FIDAL, D.L., On binary differential equations and umbilics, *Proc. Roy. Soc. Edinburgh Sect. A mathematics* **111**(1-2) (1989), 147–168, <https://doi.org/10.1017/S0308210500025087>
- [2] CAYLEY, A., On the centro-surface of an ellipsoid, *Trans. Camb. Phi. Soc.* **63** (1873), 319–365.
- [3] COUTO, I.T., LYMBERPOULOS, A., *Introduction to Lorentz Geometry: Curves and Surfaces*, Chapman and Hall/CRC Press, 2020, <https://doi.org/10.1201/9781003031574>
- [4] GARCIA, R., SOTOMAYOR, J., *Differential equations of classical geometry, a qualitative theory*, Publicações Matemáticas do IMPA. IMPA, Rio de Janeiro, 2009.
- [5] GENIN, D., KHESIN, B., TABACHNIKOV, S., Geodesics on an ellipsoid in Minkowski space, *Enseign. Math. (2)*, **53**(3-4) (2007), 307–331, <https://doi.org/10.5169/seals-109549>
- [6] HASEGAWA, M., TARI, F., On umbilic points on newly born surfaces, *Bull. Braz. Math. Soc., New Series* **48**(4) (2017), 679–696, <https://doi.org/10.1007/s00574-017-0037-9>
- [7] ISUMIYA, S., TARI, F., Self-adjoint operators on surfaces with singular metrics, *J. Dyn. Control Syst.* **16**(3) (2010), 329–353, <https://doi.org/10.1007/s10883-010-9096-6>
- [8] KLINGENBERG, W., *A Course in differential geometry*, Springer Science+Business Media, 1978, <https://doi.org/10.1007/978-1-4612-9923-3>
- [9] LÓPEZ, R., Differential geometry of curves and surfaces in Lorentz-Minkowski space, *Int. Electron. J. Geom.* **7**(1) (2014), 44–107, <https://doi.org/10.36890/iejg.594497>
- [10] MENDES, C.M., MARIA APARECIDA SOARES RUAS, Hyperbolic motions of conics, *Amer. Math. Monthly* **94**(9) (1987), 825–845, <https://doi.org/10.2307/2322815>
- [11] MONGE, G., Sur les lignes de courbure de la surface de l'ellipsoïde, *Journ. Ecole Polytech.*, II cah. (1796), 145–165.
- [12] ODEHNAL, B., STACHEL, H., GLAESER, G., *The universe of quadrics*, Springer, Berlin, 2020, <https://doi.org/10.1007/978-3-662-61053-4>
- [13] SOTOMAYOR, J., An encounter of classical differential geometry with dynamical systems in the realm of structural stability of principal curvature configurations, *São Paulo J. Math. Sci.* **16** (2022), 256–279, <https://doi.org/10.1007/s40863-021-00231-6>
- [14] SOTOMAYOR, J., El elipsoide de Monge y las líneas de curvatura, *Materials Matemáticas* **1** (2007), 1–25.
- [15] SOTOMAYOR, J., O elipsóide de Monge, *Revista Matemática Universitária* **15** (1993), 33–47.

- [16] SOTOMAYOR, J., GARCIA, R., Historical comments on Monge's ellipsoid and the configurations of lines of curvature on surfaces, *Antiquitates Mathematicae* **10** (2016), 169–182, <https://doi.org/10.14708/am.v10i0.1918>
- [17] SOTOMAYOR, J., GUTIERREZ, C., Structurally stable configurations of lines of principal curvature, in *Bifurcation, ergodic theory and applications 1981*, *Astérisque* **98-99**, 195–215.
- [18] STRUIK, D.J., *Lectures on classical differential geometry*, Dover Publications, Inc., New York, second edition, 1988.
- [19] TABANOV, M.B., New ellipsoidal confocal coordinates and geodesics on an ellipsoid, *J. Math. Sci.* **82**(6) (1996), 3851–3858, <https://doi.org/10.1007/BF02362647>
- [20] TARI, F., Caustics of surfaces in the Minkowski 3-space, *Q. J. Math.* **63**(1) (2012), 189–209, <https://doi.org/10.1093/qmath/haq030>
- [21] TEJADA, D., *Linhas de curvaturas principais e geodésicas nulas em superfícies imersas no espaço de Minkowski 3-dimensional*, Tese - UFG - Goiânia, 2018.

Ronaldo Garcia

orcid.org/0000-0001-8876-6956

e-mail: ragarcia@ufg.br

Instituto de Matemática e Estatística
Universidade Federal de Goiás
Goiânia-GO, Brazil

Dimas Tejada

orcid.org/0009-0005-2513-5424

e-mail: dimas.tejada@ues.edu.sv

Facultad de Ciencias Naturales y Matemática
Universidad de El Salvador
San Salvador, El Salvador